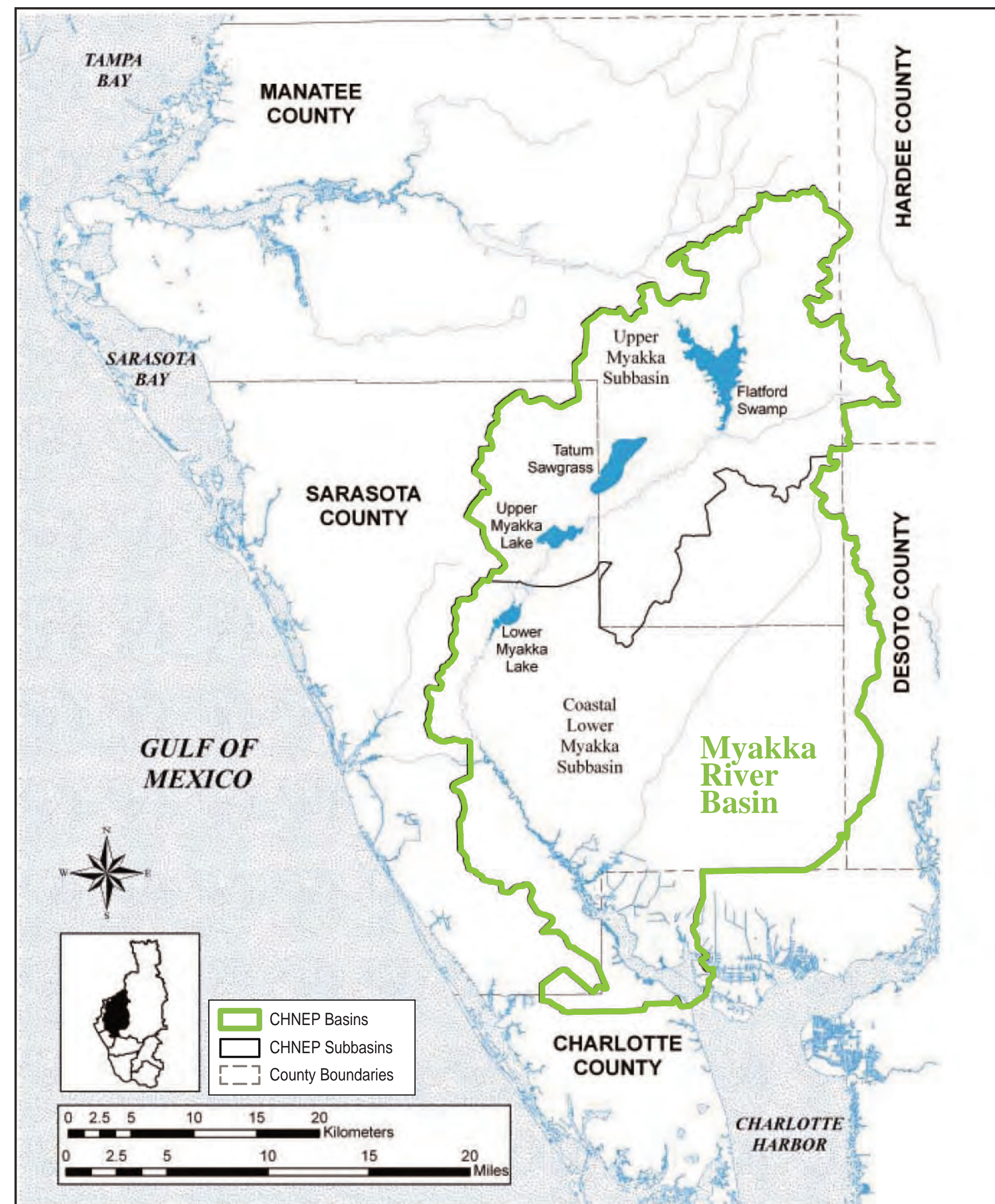


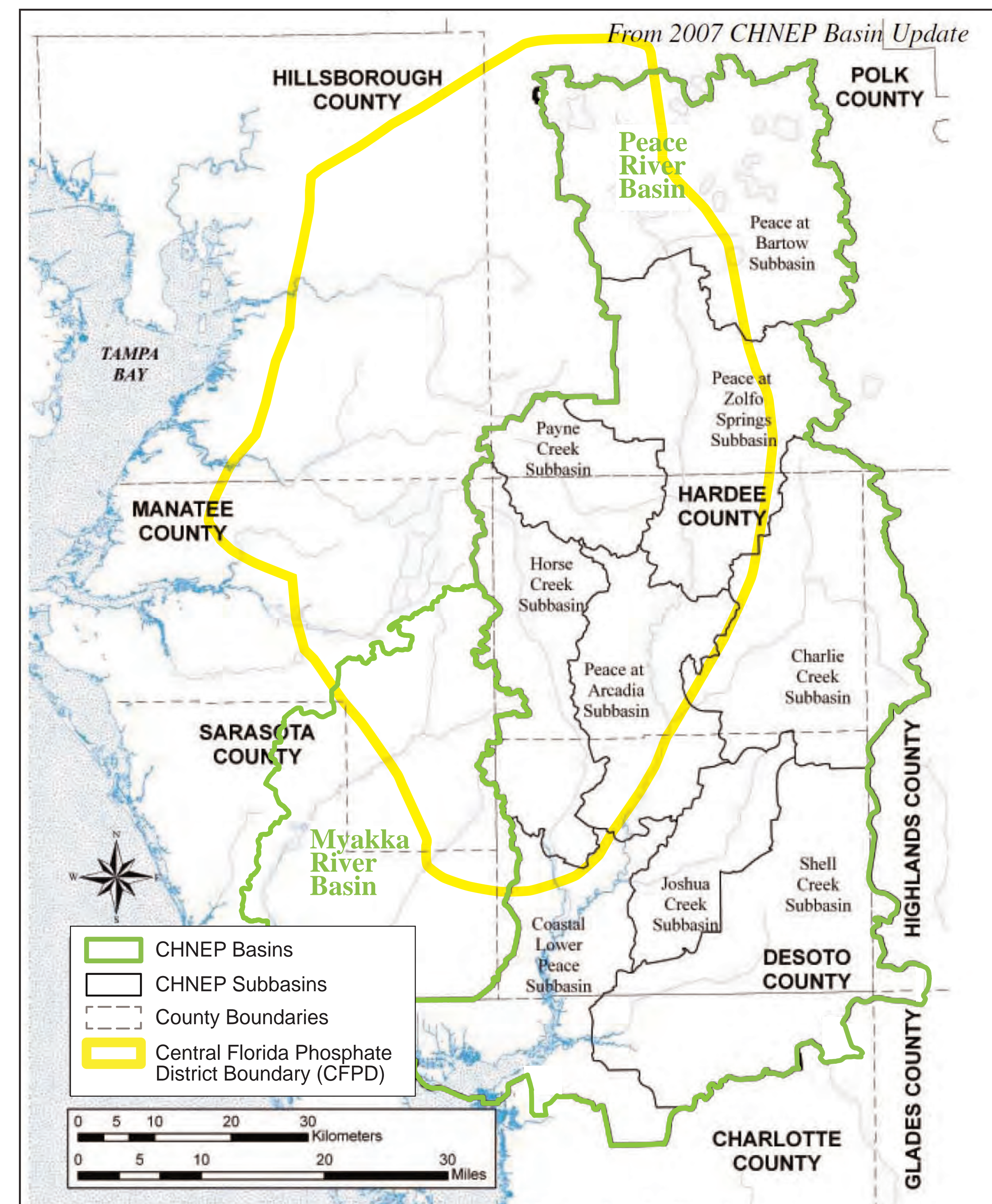
Phosphate Mining Background

AEIS Study Area, CFPD & Key Watersheds

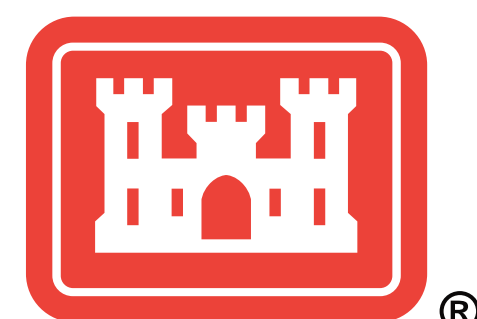


Myakka River Watershed (Basin)

(Modified from CHNEP, 2008)



Peace River Watershed (Basin)



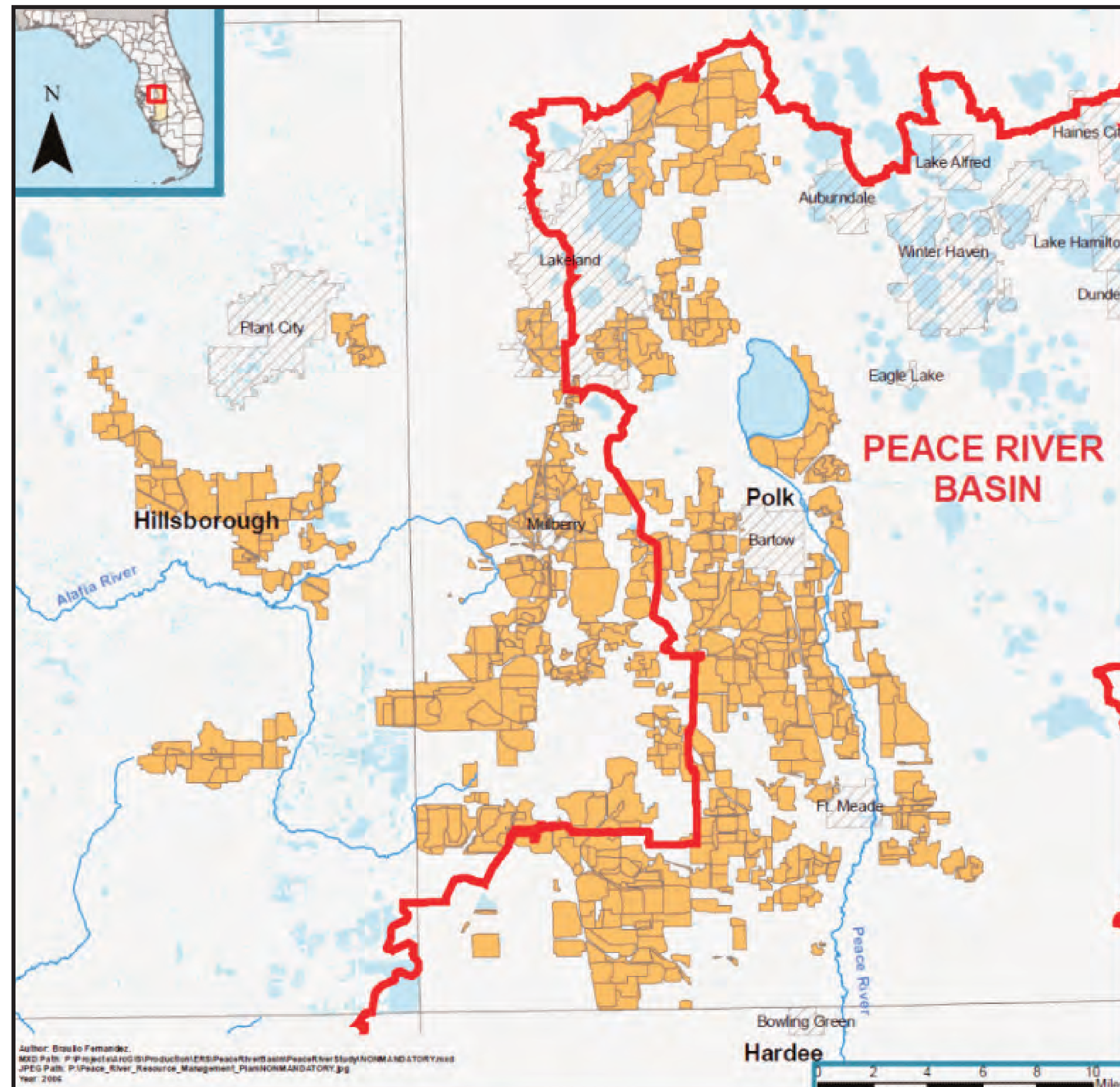
US Army Corps of Engineers
BUILDING STRONG®

Areawide Environmental Impact Statement for Continued Phosphate Mining in the Central Florida Phosphate District

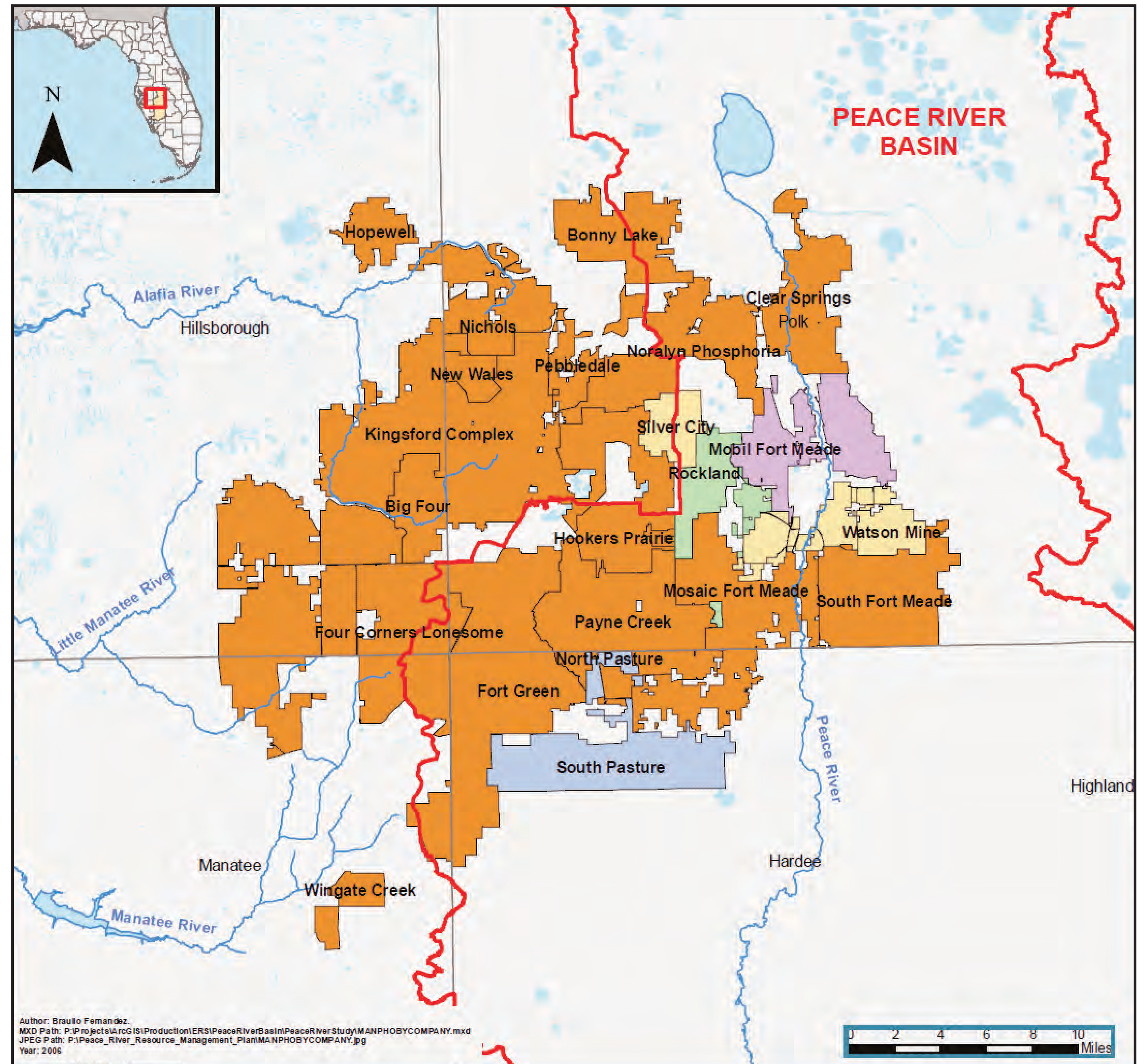
CH2MHILL.

Phosphate Mining Background

Phosphate Reclamation History

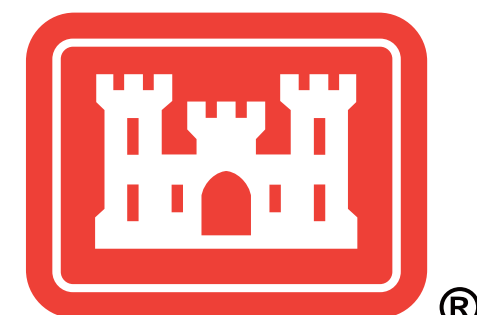


■ Pre-1975 Non-Mandatory Reclamation



■ Post-1975 Mandatory Reclamation

Source: Peace River Resource Management Plan, 2007



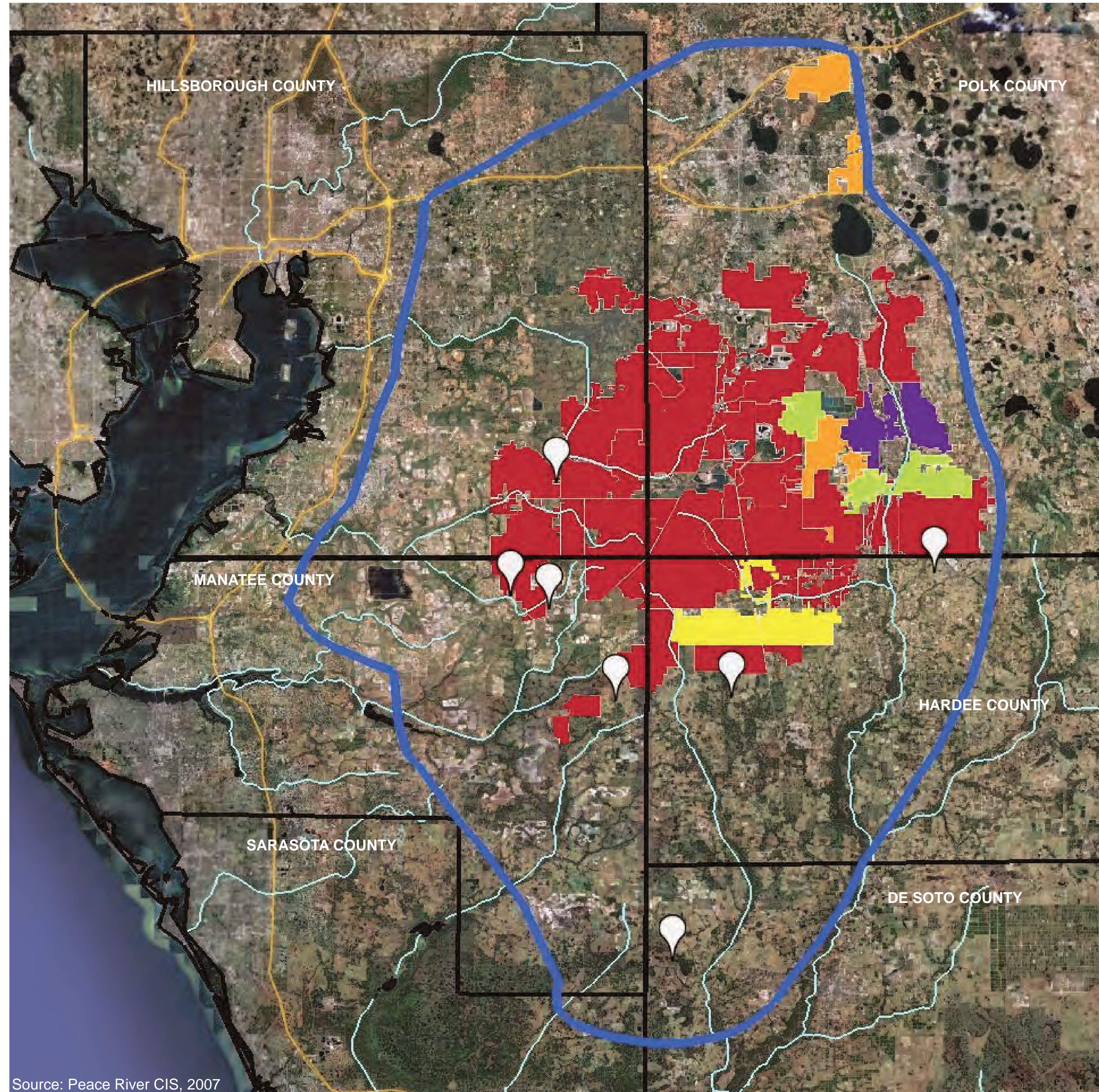
US Army Corps of Engineers
BUILDING STRONG

Areawide Environmental Impact Statement for Continued Phosphate Mining in the Central Florida Phosphate District

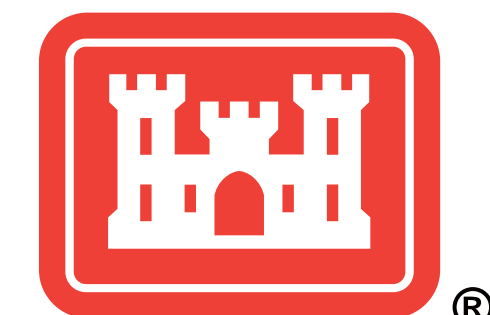
CH2MHILL.

Phosphate Mining Background

Central Florida Phosphate District



- Legend**
- Central Florida Phosphate District Boundary
 - Proposed Mine Locations
- Existing Mine Locations by Company:**
- Mosaic
 - U.S. Agri-Chemicals
 - Estech
 - Mobil-Exxon
 - CF Industries



US Army Corps of Engineers
BUILDING STRONG

North
 Not to Scale

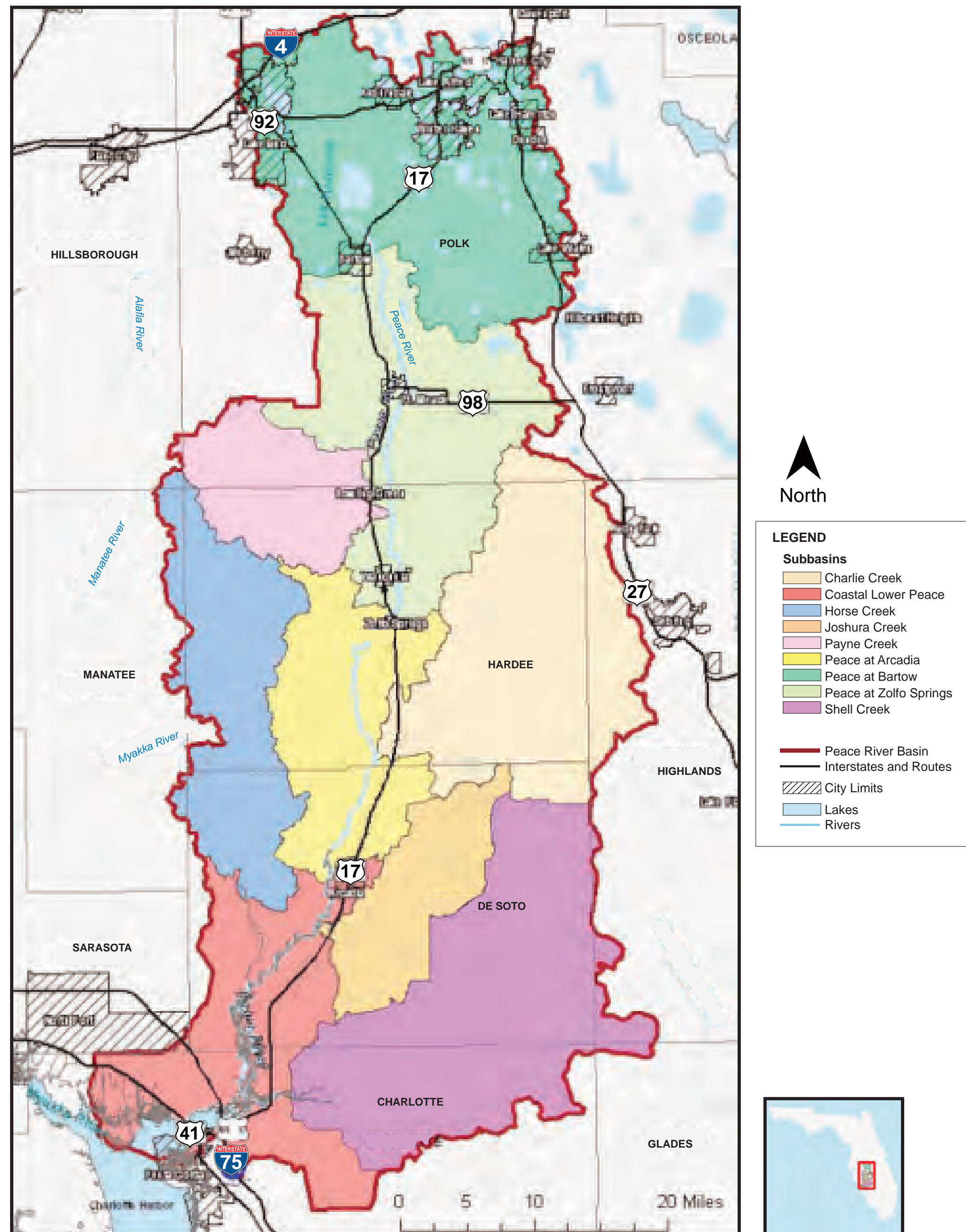
Source: Peace River CIS, 2007

Areawide Environmental Impact Statement for Continued Phosphate Mining in the Central Florida Phosphate District

CH2MHILL.

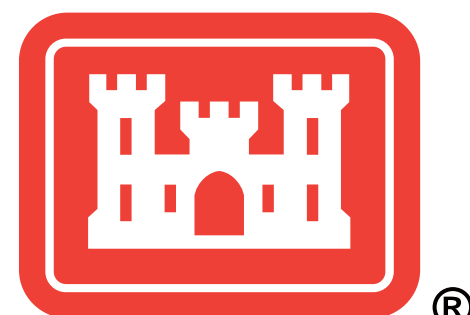
Phosphate Mining Background

FDEP Peace River Resources Management Plan








Modified from FDEP, 2007

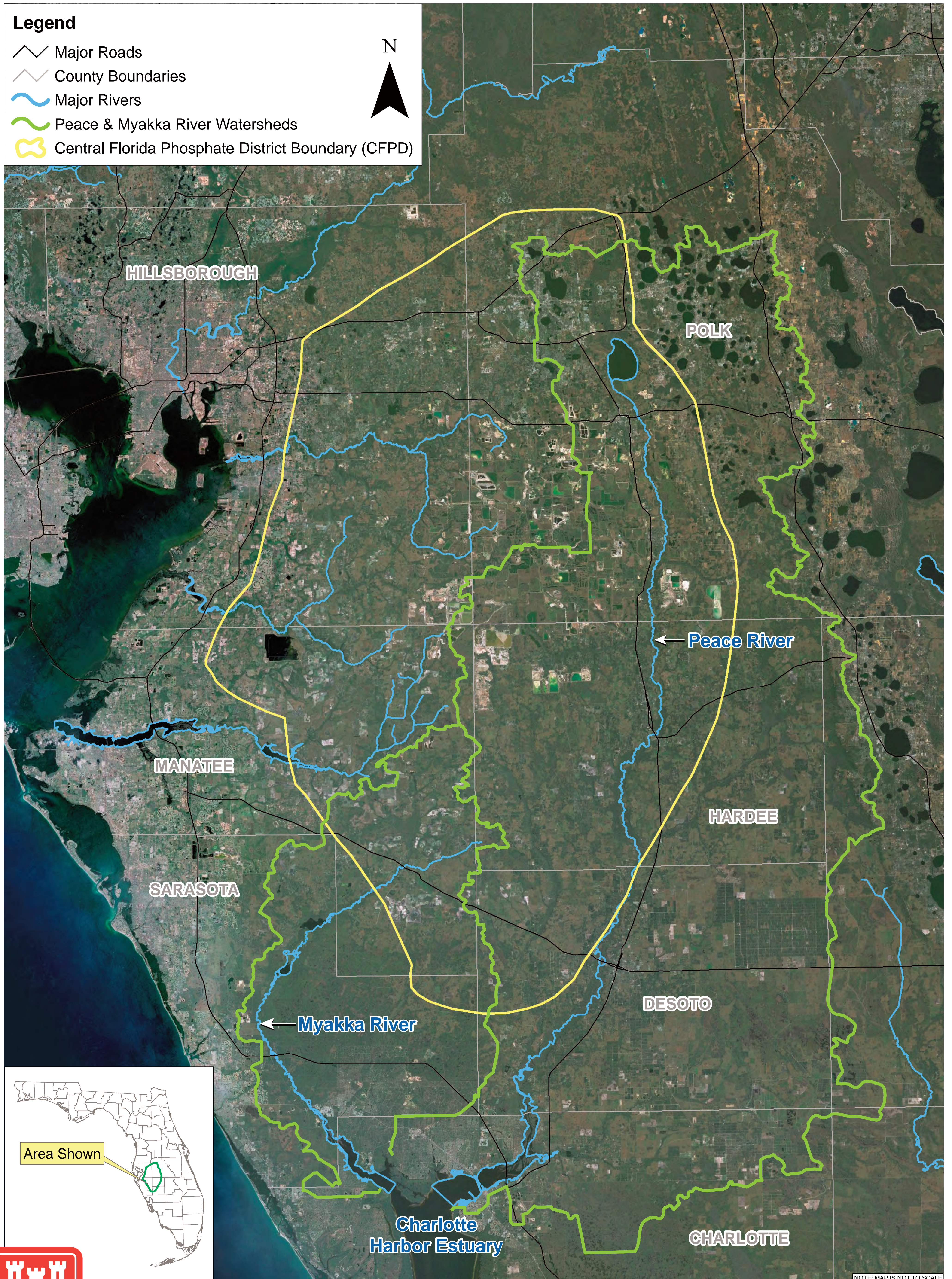
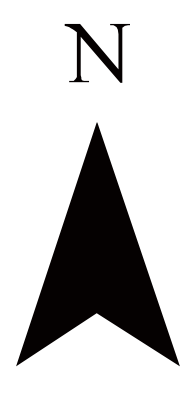
- Conservation Land Acquisition Plan & Funding Strategy
- Non-mandatory Reclamation Funding & Targeted Reclamation
- Fund Environmental Infrastructure
- FDEP & SWFWMD Joint Permitting Review of Cumulative Impacts
- Combine the ERP & Conceptual Reclamation Plan



Location of the Central Florida Phosphate District in Relation to the Peace and Myakka River Watersheds

Legend

-  Major Roads
-  County Boundaries
-  Major Rivers
-  Peace & Myakka River Watersheds
-  Central Florida Phosphate District Boundary (CFPD)



NOTE: MAP IS NOT TO SCALE



US Army Corps of Engineers
BUILDING STRONG

Areawide Environmental Impact Statement for Continued
Phosphate Mining in the Central Florida Phosphate District

CH2MHILL.